

## n25 500

Thermally broken minimal sliding system

# TECHNICAL SHEET OF PRODUCT

Minimalist sliding system, with a view in elevation of only 21mm to the central profile, which allows, through the use of structural glass, the execution of large spans. With a depth from 172.5mm in perimetral outer frame and 68mm in the sash, the n25 500 system is available in the mono-rail, bi-rail, and tri-rail versions, through the use of connection structural polyamides. In response to the trends of contemporary architecture, the system allows the creation of spans with fillings up to 38mm, where the 54mm view in the frame, sills, and copings are incorporated into the construction, resulting in high levels of luminosity, without neglecting functionality. The integration of the window in the building systems emphasizes the relationship between the interior and the exterior, allowing an unlimited view, even at the full opening angle of the span in corner trims. With remarkable thermal and acoustic performances, this system is positioned as a preferred product in architectural projects where aesthetic and luminosity considerations are assumed as fundamental premises.

**outer frame:** 172,5 to 351,5 mm.

**glazing:** 36 up to 42 mm.

**surface finishing:** anodizing, powder coating, bicolour and wood-effect finishing possibilities.

**dimensions and maximum weights:**

constraints depends on the typology and respective accessories.

(information available in the technical catalogue).

**test result:** system developed in accordance with EN 14351-1:2008 norm, which defines the requirements of CE marking oriented to the final product, being a guarantee of compliance with the basic requirements required by the Construction Products Regulation (Regulation (EU) in 305/2011).

**SLIDING WINDOW 2 SASHES**  
2100 x 2300 mm



**thermal transmission:**  $U_w = 2,0 \text{ W/m}^2\text{K}$

$U_g = 1,0 \text{ W/m}^2\text{K}$

(ISO 10140-1:2017 / ISO 10077-2:2017)

Report: CXL 070/23 O.N. n°2211

**SLIDING WINDOW 2 SASHES**  
2100 x 2300 mm



**air permeability:** class 4  
(EN 1026 | EN 12207)



**water tightness:** class 6A  
(EN 1027 | EN 12208)



**resistance to window load:** class B5 (2000 Pa)  
(EN 10211 | EN 12210)

Report: CXL 003/23 O.N. n°2211

**SLIDING WINDOW 2 SASHES**  
1230 x 1480 mm



**acoustic attenuation:**  $R_w(C;Ctr) = 39(-1;-3)\text{dB}$

with glass  $R_w(C;Ctr) = 45(-2;-6)$

(ISO 10140-2:2021, ISO 717-1:2020)

Report: ACL079/24 O.N. n°2211

**SLIDING WINDOW 1 SASH+ FIXED**  
1230 x 1480 mm



**acoustic attenuation:**  $R_w(C;Ctr) = 40(-1;-4)\text{dB}$

with glass  $R_w(C;Ctr) = 45(-2;-6)$

(ISO 10140-2:2021, ISO 717-1:2020)

Report: ACL090/24 O.N. n°2211

**SLIDING WINDOW 1 SASH + FIXED**  
2650 x 2500 mm

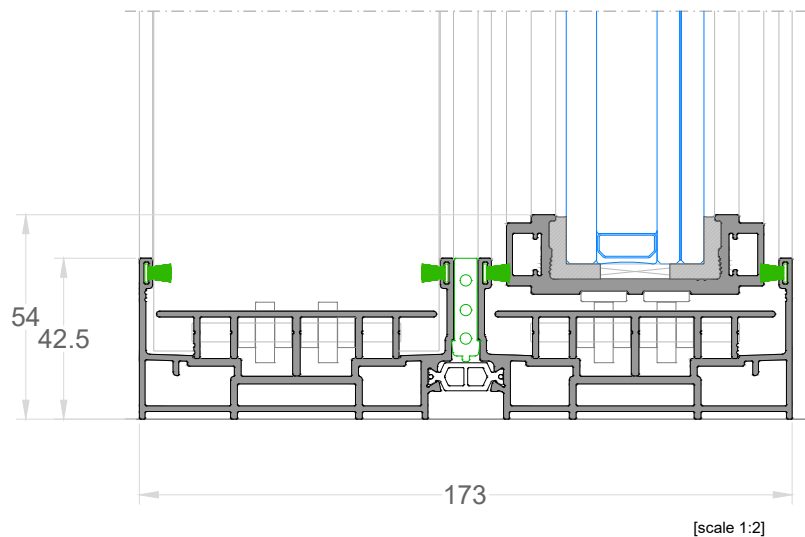
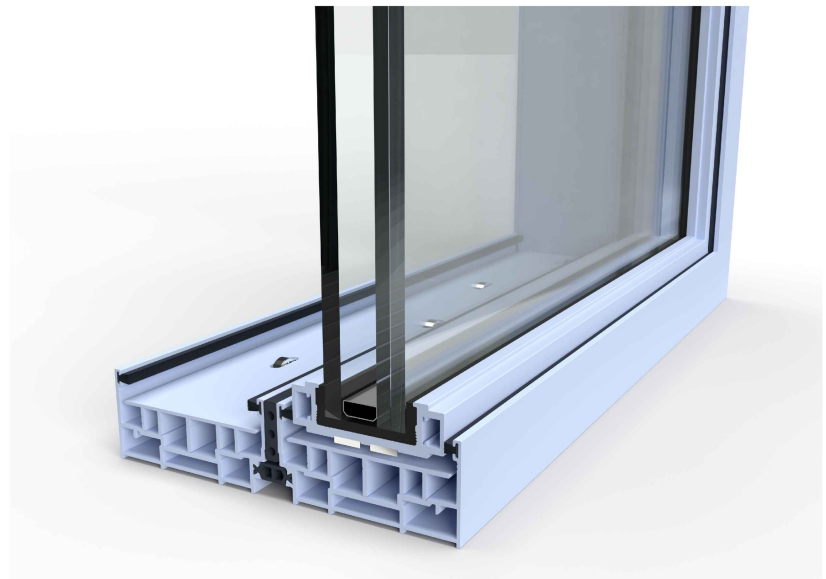


**acoustic attenuation:**  $R_w(C;Ctr) = 38(-1;-4)\text{dB}$

with glass  $R_w(C;Ctr) = 42(-2;-6)$

(ISO 10140-2:2021, ISO 717-1:2020)

Report: ACL126/24 O.N. n°2211



[scale 1:2]

