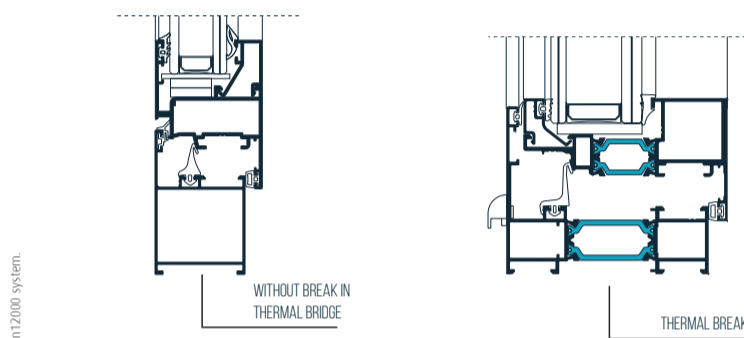


HOW TO CHOOSE YOUR WINDOW?

What are you looking for in a window?
A solution **without** or **with** thermal bridge break?



When to install solutions without thermal bridge:

- Interior spans.
- Without thermal and acoustic requirements.
- Second windows.
- More economical solutions.

When to install solutions with RPT:

- Better thermal insulation.
- Better acoustic insulation.
- Energy and environmental savings.
- Double colour spans.

PERFORMANCE FACTORS TO CONSIDER



Energy efficiency of the system.



enchimentos
14-45mm



resistência ao vento
Classe C2



permeabilidade ao ar
Classe 4



transmissão térmica
 $U_w=1,55 \text{ W/m}^2 \cdot \text{K}^*$
($U_g=1,1 \text{ W/m}^2 \cdot \text{K}$)



estanquidade à água
Classe E900



atenuação acústica
 $R_w(C;Ctr)<38(-1;-4)\text{dB}$
c/vidro $R_w=40 (C;-4)\text{dB}$

System performance.

*with insulation profile
hidden leaf system n14300.

NAVARRA SYSTEMS

CASEMENT SYSTEMS WITH RPT

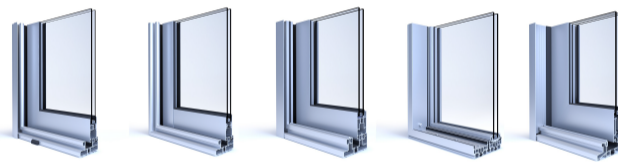


n14 100 n14 200 n14 200 - n14 300 FO n14 300 n14 600



n14 700 n14 800 n16 100 n16 200 n17 100 n18 200

RAILWAY SYSTEMS WITH RPT



n24 000 n24 000 OnUrb n24 200 n25 400 n26 200

CASEMENT SYSTEMS WITHOUT RPT



n10 000 n12 000 n13 000

RAILWAY SYSTEMS WITHOUT RPT



n20 200 n21 000 n23 000 n25 000

CLEANING AND MAINTENANCE



Use only neutral solutions when cleaning.



Use soft objects such as sponges, cloths and brushes to help remove dirt.



Do not use products derived from petroleum or any other type of abrasive material.



It is recommended to periodically check the adjustment of functional components such as handles, hinges or rails where the windows run.

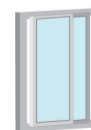
TYPES OF OPENINGS



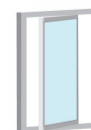
FIXED



SWING



SLIDING



VERTICAL
HINGED



HORIZONTAL
PIVOTING



PROJECTING



OSCILLATING HINGED



SLASH WINDOW/ DOOR